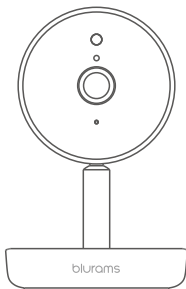


blu**rams**

Smart Home Camera

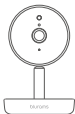
A10C



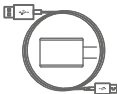
Manual

Package Information

After removing the package, please check if the camera is in good condition and the accessories are complete.



1× Camera



1× USB cable &
Power adapter



1× Screw accessory
pack

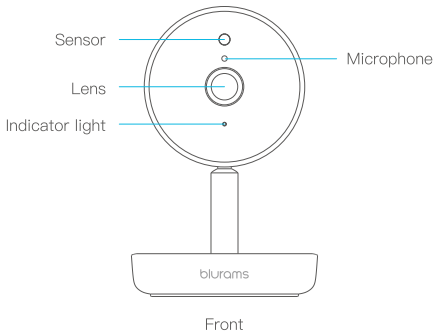


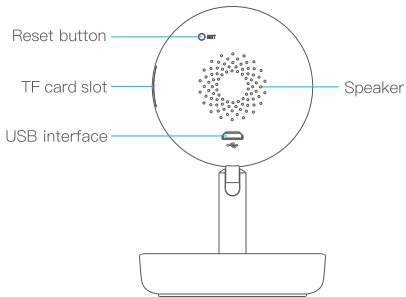
1× Mounting Base



1× Manual

Camera Component





Back

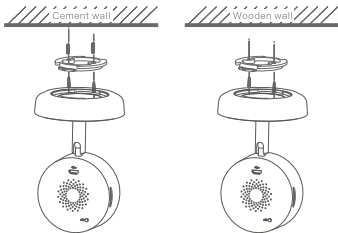
Installation instructions

- 1 Placing the camera in a best position.
- 2 Power on this camera to a power socket via the USB cable.

- 3 Installation Tips

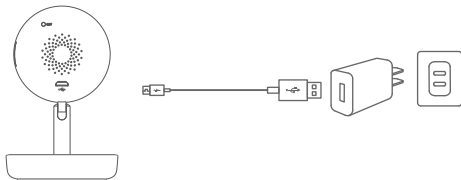
You can follow this to install the camera:

- A. Choose the location where you exactly want to put the camera.
- B. Place the mounting tab on the wall and drill through it to make holes for making first.
- C. Aligning this IP camera with the mounting tab.
- D. Place the camera over the fastened mounting tab and rotate it until it's locked and secured.



Quick configuration

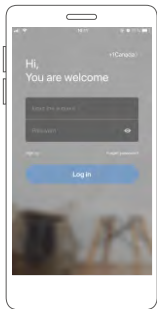
- 1 Connecting the IP camera to power socket with a usb cable.



- 2 Make sure your phone is connecting to a 2.4G WiFi network. Then scan the QR code and download the blurams app which is for free.



- 3 Register and log into the blurams account.
- 4 Following the app instruction to add the camera.



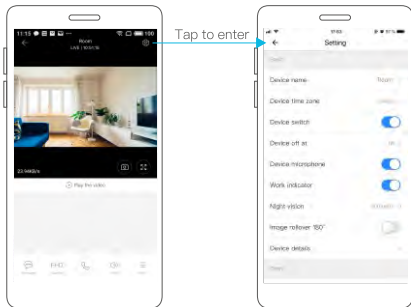
5 Live View.

Enter into the video interface on the blurams App, where you can live view the videos or choose the setting options such as voice command, two-way audio, snapshot and video recording.



6 Parameters Setting.

Tap setting options to enter the setting interface, where various custom setting are available.



FAQs

1 Measures against camera–network connection failure:

- The camera does not support 5G WiFi network temporarily. Please make sure the WiFi network around the camera is in good condition.
- Re–plug the power supply to assure the reliable connection.
- Reconfigure the camera.
- Customer service E–mail: support@blurams.com.

2 Indicator light connotation:

Green Light	Online
Green Light Blinking	Connecting
Red Light	Starting
Red Light Blinking	Waiting for scan

FCC Statement

This equipment has been tested and found to comply with the limits for a Class B digital device, pursuant to part 15 of the FCC rules.

These limits are designed to provide reasonable protection against harmful interference in a residential installation. This equipment generates, uses and can radiate radio frequency energy and, if not installed and used in accordance with the instructions, may cause harmful interference to radio communications. However, there is no guarantee that interference will not occur in a particular installation.

If this equipment does cause harmful interference to radio or television reception, which can be determined by turning the equipment off and on, the user is encouraged to try to correct the interference by one or more of the following measures:

- Reorient or relocate the receiving antenna.
- Increase the separation between the equipment and receiver.
- Connect the equipment into an outlet on a circuit different from that to which the receiver is connected.
- Consult the dealer or an experienced radio/TV technician for help.

To assure continued compliance, any changes or modifications not expressly approved by the party.

Responsible for compliance could void the user's authority to operate this equipment. (Example– use only shielded interface cables when connecting to computer or peripheral devices).

This equipment complies with Part 15 of the FCC Rules.

Operation is subject to the following two conditions:

- (1) This device may not cause harmful interference, and
- (2) This device must accept any interference received, including interference that may cause undesired operation.

FCC Radiation Exposure Statement:

The equipment complies with FCC Radiation exposure limits set forth for uncontrolled environment. This equipment should be installed and operated with minimum distance 20cm between the radiator and your body.

FCC ID: 2ASAQ-A10C

blurams



www.blurams.com