

Wansview

Wire-Free Battery-Powered  
1080P Indoor & Outdoor Home Security Camera  
User Manual

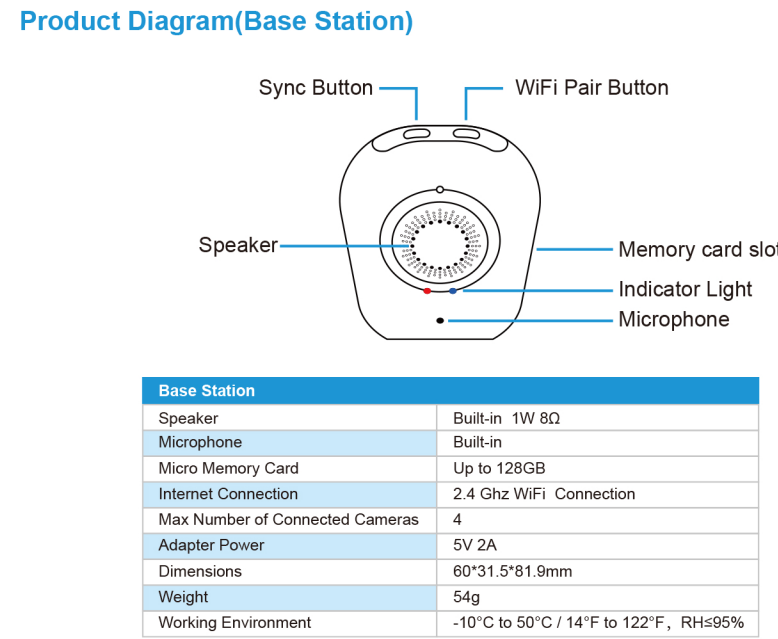
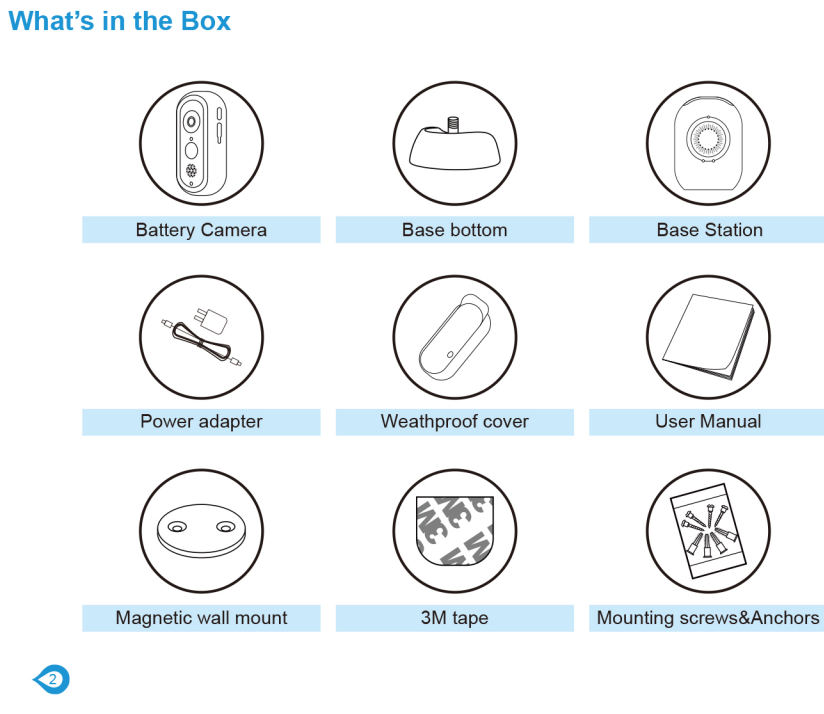
B1

T1



We keep improving the app. If the app interface is not accordance with the instructions, please go to wansview website: <http://www.wansview.com> for the latest instructions.

EN Version Updated on 25 September 2018

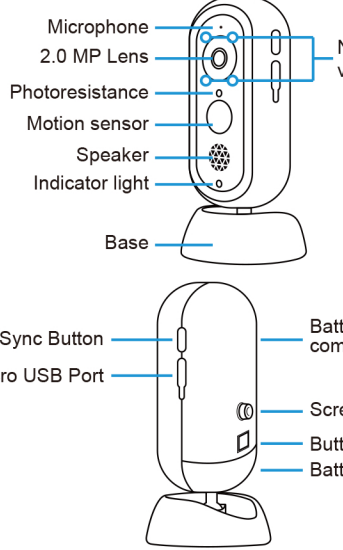


LED Indicator	Working status
OFF	Sleep mode/Power Off
Solid on in red	NO internet
Flashes red&blue slowly alternately	WiFi configuration
Solid on in blue	Connected to internet
Flashes blue slowly	Pairing mode
Flashes red quickly	Restore to factory setting

#### Button Controls(Base Station)

Button	Function	Operation
Wi-Fi Pair Button	Pair with the WiFi	Press and hold 5 seconds to enter pairing mode with the LED indicator flashing red&blue slowly
Sync Button	Pair with the camera	Press and hold 5-6 seconds to enter pairing mode with the LED indicator flashing blue slowly
Press the Wi-Fi Pair Button & Sync Button at the same time	Restore to factory settings	Press and hold for 3 seconds

Product Diagram(Camera)



Camera	
Lens	120° wide angle f/2.0
Sensor	1/2.7 inch
Resolution	1080P(1920*1080)/Full HD Resolution
Microphone	Built-in
Speaker	Built-in 1W 8Ω
PIR Detection	Detection angle 110°
Battery life	Two 18650 Lithium batteries(not include) Battery life will vary based on device settings, usage, and environmental factors. Actual results may vary.
Weight	193g
Adapter Power	5V 2A or Two 18650 Lithium batteries (not include )
Internet	2.4G Wi-Fi
Weather Proof	IP65
Dimensions	61.8*61.8*130.2mm
Working Environment	-10°C to 50°C / 14°F to 122°F , RH95%

#### LED Indicator & Working Status (Camera)

LED Indication	Working status
OFF	Sleep mode/Power Off
Solid on in red	Connected the Base station or charge the camera
Flashes red & blue slowly	Pairing mode
Solid on in blue	Fully charged

#### Button Controls(Camera)

Button	Function	Operation
Sync Button	Pair with the Base station	Press and hold 10 seconds to enter pairing mode with the red&blue LED indicator flashing red&blue slowly

#### Caution

- Use the included power adapters only to charge the camera and the base station within the permitted voltage range.
- Only the camera is waterproof. The base station and adapters are for indoor use only.
- Make sure the internet is functional and fast for live data feed.
- Do not use the product at temperatures higher or lower than the specified range.
- Do not use in environments with strong electromagnetic interferences or near corrosive substances.
- The warranty does not cover defects and damages caused by misuse, unauthorized disassembling, or natural hazards.
- The 18650 battery life varies according to the frequency of the triggers and the video resolution settings.
- The PIR motion sensor can only detect motions within a certain range and will not be activated by motions out of the range.

#### Get Started Download APP

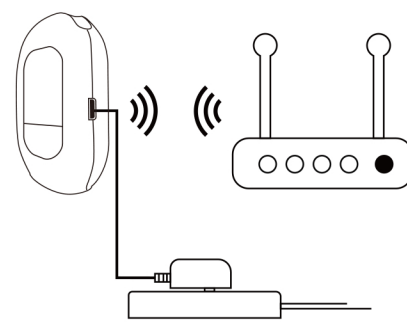
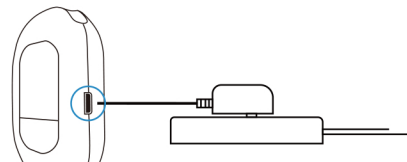
- 1 Go to the App Store or Google Play to search and download "wansview" APP to your smart phone or tablet.



- 2 Or scan below QR code to get the APP.

#### Power On Base Station

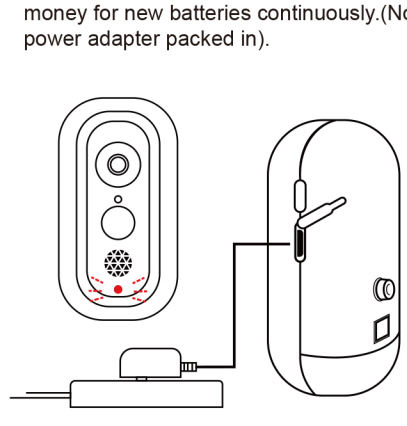
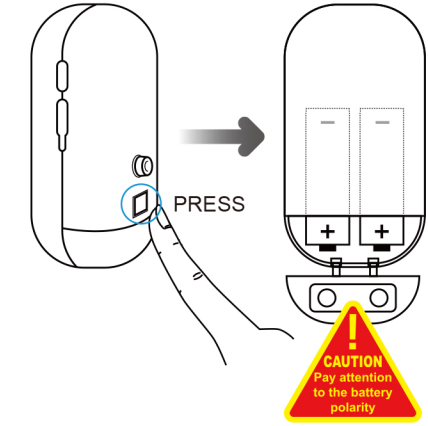
- 1 Connect the Base Station to a power source.
- 2 Place the Base Station next to the router before configuring.



**Note:**  
The LED indicator on the Base Station will keep solid blue light when connected to the internet successfully.

#### Power the Camera

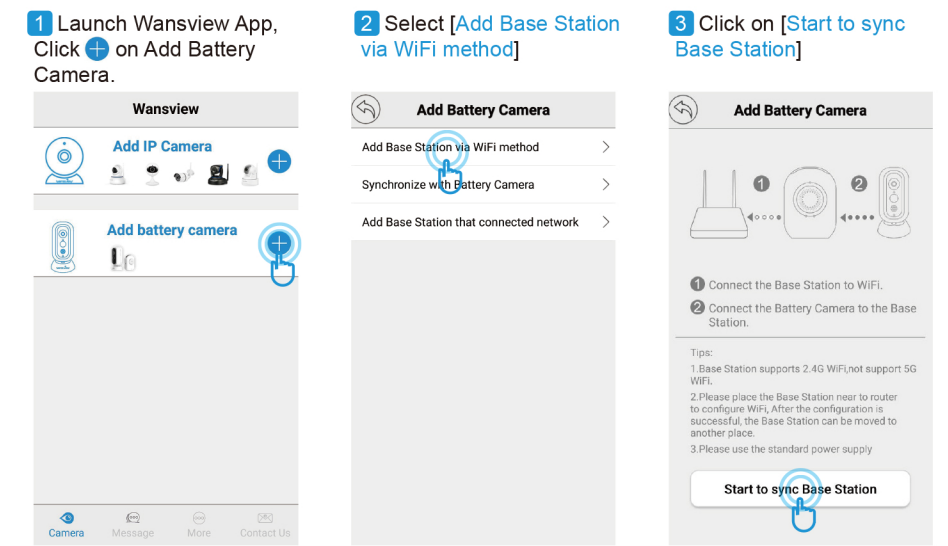
- 1 Please install two 18650 lithium batteries in the camera before using.
- 2 Coming with micro USB connector on the battery, the wifi camera can be charged by universal 5V 2A phone adapter. Save your money for new batteries continuously.(No power adapter packed in).



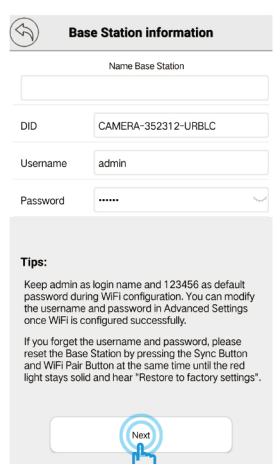
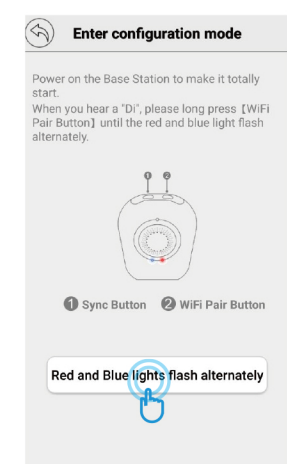
**Tips:** In order to extend the working time of the battery, please turn off the motion sensor when using it outdoors.

#### Connect Base Station to Network

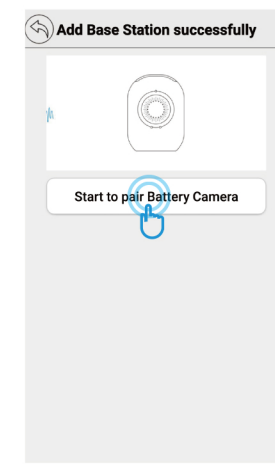
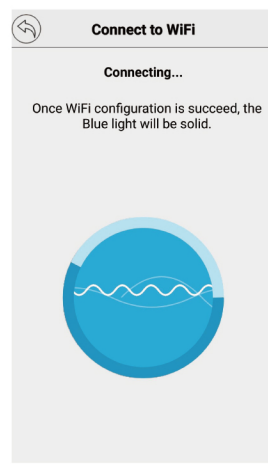
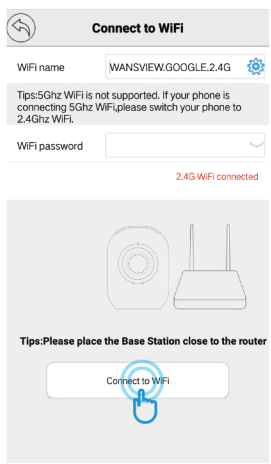
Connect your mobile phone with 2.4G WiFi. (5G is not supported for the Base station) If you are using a dual band router, make sure your 2.4G WiFi name is different from your 5G one.



- 4 Long press [WiFi Pair Button] on the Base Station until you hear [Please Sync the Base Station to the Router], then Click on [Red and Blue lights flash alternately].
- 5 Scan the QR code on the back of the Base Station.
- 6 Name Base Station, then click on [Next].

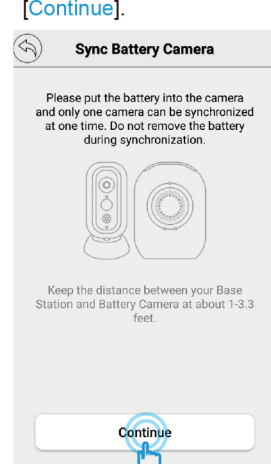
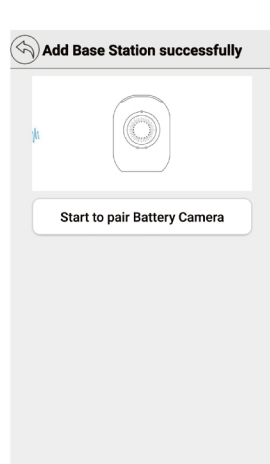


- 7 Your home WiFi will be located, please input your WiFi password correctly. Click on [Connect to WiFi].
- 8 Base Station will try to connect 2.4G, and you will hear [Received WiFi Information] and Add Base Station Successfully.
- 9 Once the Base Station is connected, you will hear [Succeeded to Connect Router] and Add Base Station Successfully.

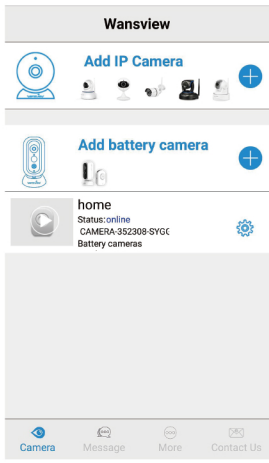
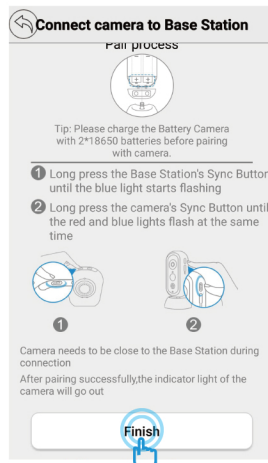


#### Sync Battery Camera to Base Station

- 1 Click On [Start to pair Battery Camera].
- 2 Ensure that the camera is inserted workable battery or plugged with power supply, then click on [Continue].

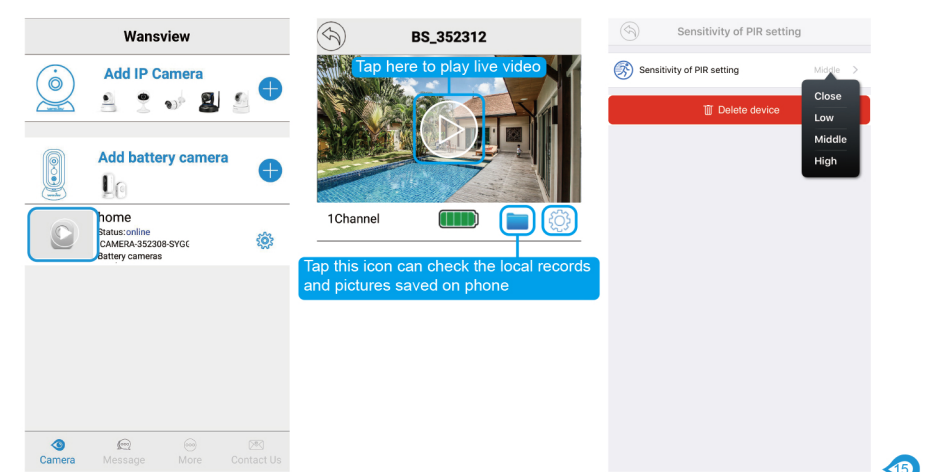


- 3 Long Press the [Sync Button] on Base Station until the blue light starts flashing and hear [Entering Sync Mode]. Then long press the [Sync Button] on Battery Camera until the red&blue lights flash at the same time. Click on [Pairing] When you hear [Sync Succeeded] and Base Station will be Online.

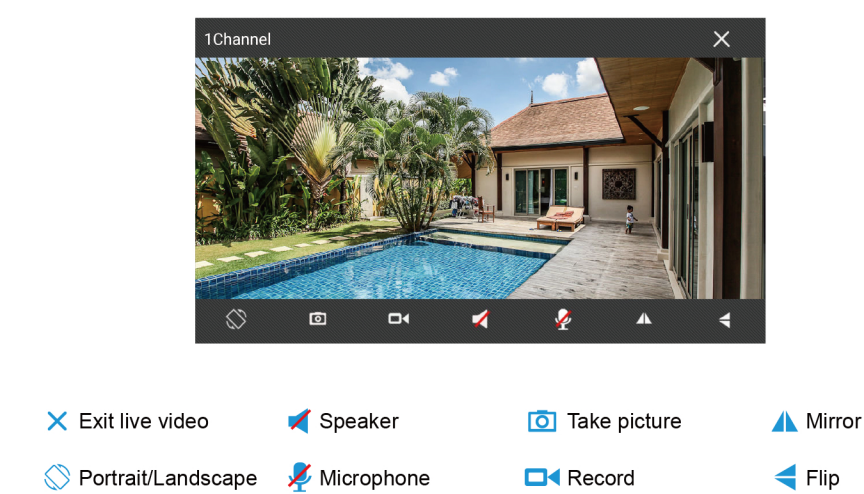


#### More Operations for the Battery Camera.

When the Base Station is online, tap [Camera] to view the Battery Camera. Tap icon [Camera] can setup the PIR motion, close/Low/Middle/High can be switched according to your need. After enabled PIR motion detection, the battery camera can send notification to your phone when an alarm is detected, refer to page 18 Push Setting. It also can record alarm video to memory card if memory card is available, refer to page 19 Memory Card Alarm setting.

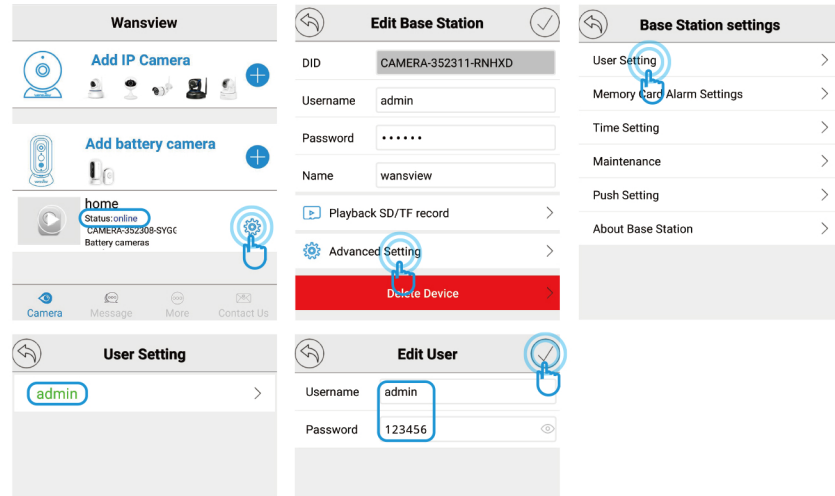


#### Full Screen View



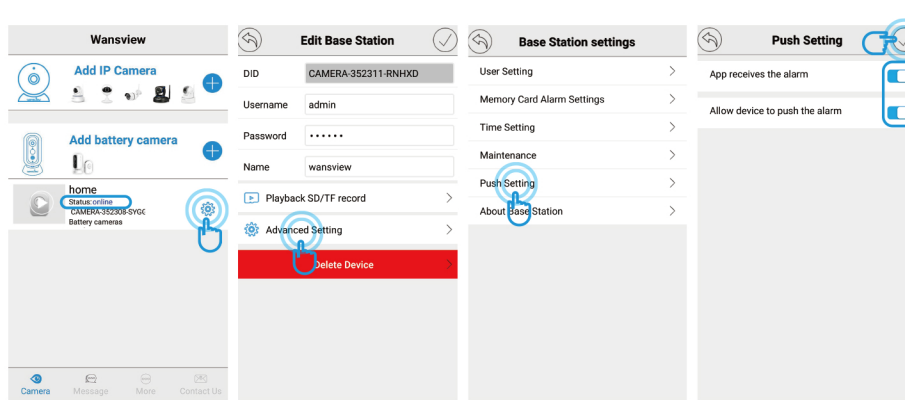
#### More Operations for the Base Station

When the Base Station is online, user can do the below operations:  
1. Change Username and password  
For safety reason, please follow below illustration to change the default username and password after the Base station is connected to Wi-Fi.



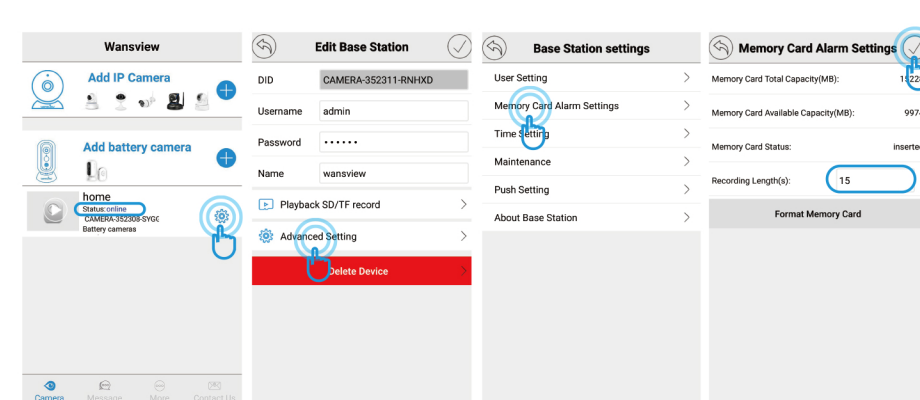
#### 2. Push setting

Tap [Push] — Advanced setting — Push setting to enable App receives the alarm and allow device to push the alarm.



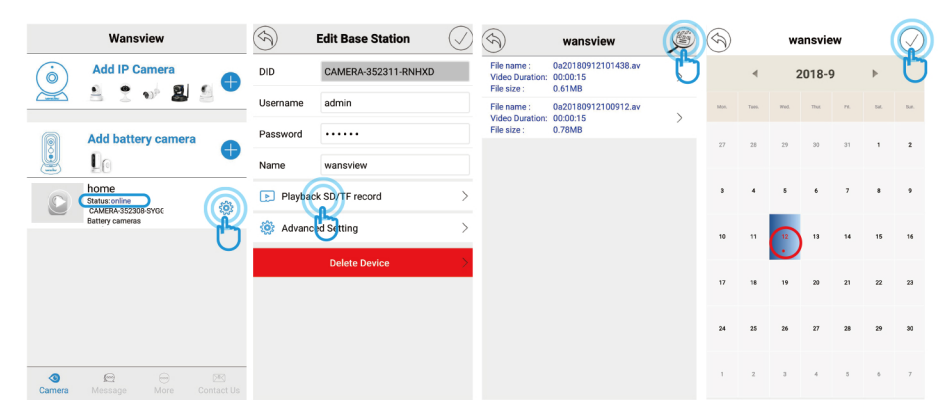
#### 3. Memory Card Alarm setting

The Base Station supports 128GB memory card, memory card is not included! It will send a short feed to memory card when an alarm is detected by battery camera (refer to page 15 About PIR setting) if the memory card is available. The video length can be adjusted between 10-30 seconds, please follow the below illustration to set it up:

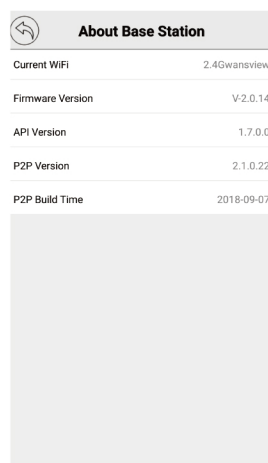


#### 4. Playback SD/TF Record

The alarm videos saved on memory card can be playback via Wansview App. When the Base Station is online, tap icon [Calendar] — Playback SD/TF card can check the alarm videos. If you have Android phone, tap [Calendar] to see the Calendar, the date with red dot means there are alarms were recorded, below illustration is for Android App. If you have IOS device, the App will go to Calendar after tapped Playback SD/TF.

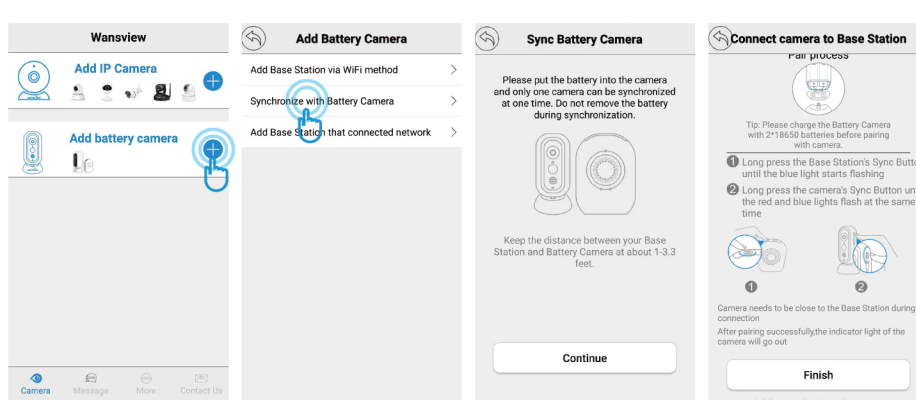


5. Maintenance  
User can reboot the Base Station and Restore the Base Station to Factory Default, if it is restored, user needs to set up WiFi for the Base Station again.
6. About Base Station  
User can check the basic information for the Base station, such as WiFi status, Firmware etc.



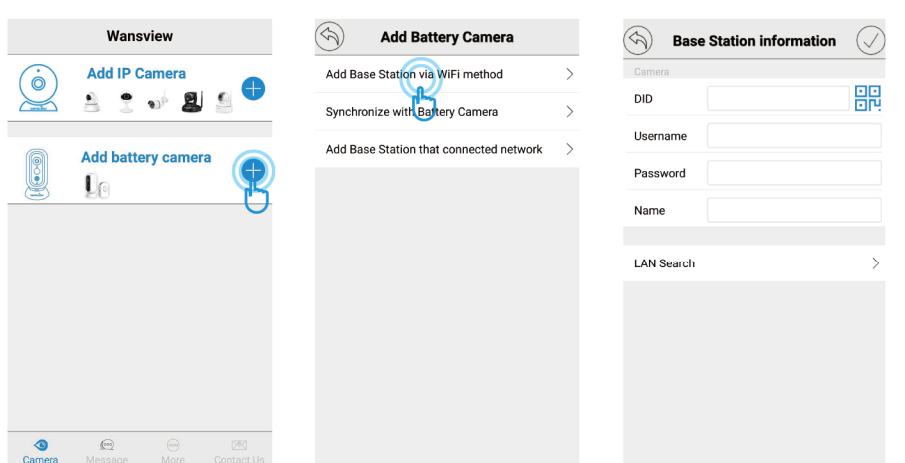
#### Synchronize with Battery Camera

If you have 2 or more Battery cameras, please follow below steps to connect to the Base Station, please refer to P13-14 for more details.  
Tips: One Base Station can manage up to 4 Battery Cameras.



#### Add Base Station that connected network

This option is suitable for adding the Base Station to another phone or the Base station is removed from the app and want to add again.  
Please follow the below steps:  
Tap [Add] on Add Battery camera to the Base Station already connected network



#### There are three ways to add the Base Station to App

##### Way 1: Lan Search

If the mobile device and the Base Station are in the same WiFi network, user can use "Lan Search" to search the connected Base Station.

##### Way 2: Scan QR Code

If the Base Station is on your hand, you can tap [Scan QR Code] to scan the Base Station's QR code (on the back) to get the information.



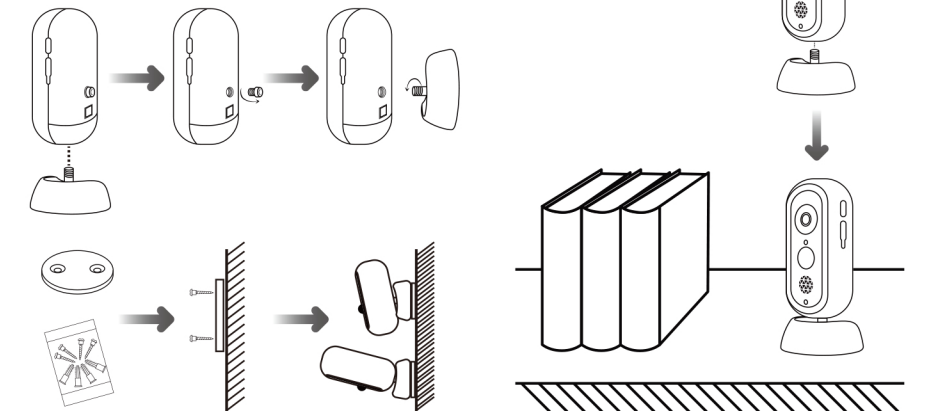
##### Way 3: Manually input Base Station information

The Base Station's DID can be found on the back of the Base Station.



#### Mount the camera on wall

Fasten the mounting screws into the wall and attach the magnetic mount. When you are mounting the camera to drywall, be sure to use the plastic anchors.



#### On the wall(Base Station)

