



Wansview 1080P Wireless Outdoor Cloud IP Camera

W4/W5/W6

Quick Installation Guide



We keep improving the app. If the app interface is not in accordance with the instructions, please go to wansview website: <https://www.wansview.com> for the latest instructions.

EN Version updated on July 1, 2020

www.wansview.com

CONTENTS

- quick installation guide×1
- power adapter×1
- camera×1
- mounting accessories×1
- WiFi antenna×1

Model W4/W5/W6



INDICATOR LIGHTS STATUS

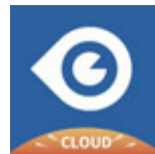
Light Status	Camera Status
Yellow light on	Camera is powered on
Yellow and green light alternately flashing	Waiting to connect
Green light flashing	Camera is connecting to Wi-Fi
Green light solid	Succeed in connecting to Wi-Fi
Yellow light quickly flashing	1.Reset camera to factory setting 2.Camera is upgrading firmware

Warm note: Please make sure your router is connected to Internet.

EASY SET UP

Step 1 Download

Go to the App Store or Google Play to search and download “Wansview Cloud” app to your supported devices.



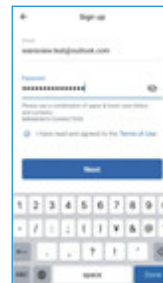
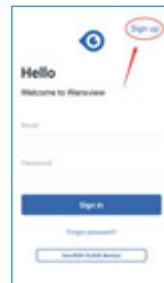
Wansview Cloud APP icon

Or scan the QR code on the right to download Wansview Cloud to your Apple or Android device.

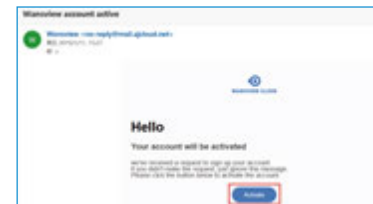


Step 2 Account Register

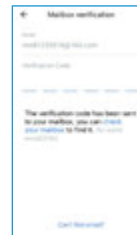
- 1 Open Wansview Cloud app, then select Sign up.
- 2 Enter your email address.



- 3 Create a password at least 8 characters long. Your password must include three of the following:
 - At least one uppercase letter.
 - At least one lowercase letter.
 - At least one number.



- 4 You will receive an email with your Verification Code. Input the Verification Code.
- 5 Go back to log into your account after account register is successful.

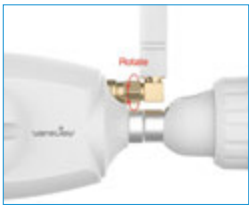


• Step 3 Power on camera and Install WiFi Antenna •

(Setup process for W4/W5/W6 is the same. Here we take the setup process for W4 as an example.)

Power on the camera with the supplied power cord and put the camera near the router.

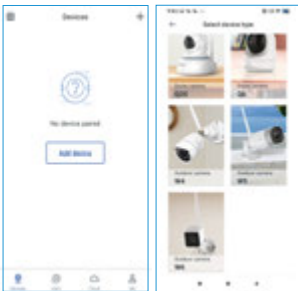
Install the antenna by rotating the screw clockwise like the picture.



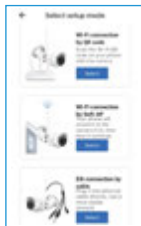
• Step 4 Connect to network •

(Setup process for W4/W5/W6 is the same. Here we take the setup process for W4 as an example.)

Connect your phone to 2.4G Wi-Fi (5G is not supported). Open the Wansview Cloud app. Please tap [Add device] or the “+” button on the upper-right corner of the screen and choose your camera model (W4).



Please select “Wi-Fi connection by QR code” .



If you see the yellow and green lights flashing on the RJ45 cable, please tap [Flashing]. If there is no green light, please check “Not Flashing” .

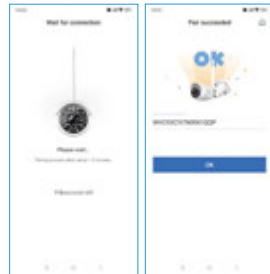


You’ ll see your Wi-Fi name. Input the correct Wi-Fi password and tap [Next]. The app will show a QR code. Please put the phone in front of the camera about 3-8 inches (8-12cm). Then, tap [Next] if you see the green light flashing quickly.



During connection, the green light will flash quickly. Once it’s connected, the green light will flash slowly.

When you hear "The pairing is successful, you can start using the camera now", the app will switch to a page where you can change the camera name. Now you can enjoy the video from the camera!



..... FAQ

• The camera can not connect to Wi-Fi ? •

Please press the reset button on camera for 5 seconds until the yellow light flashes quickly and camera says “reset is successful” .

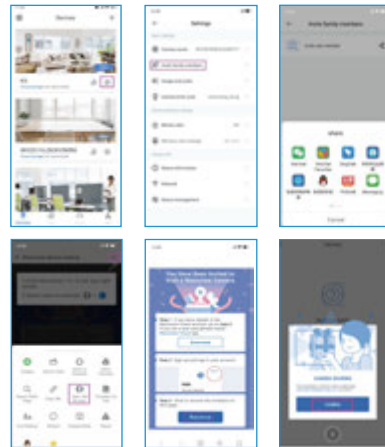
Please wait for about one minute, then camera will flash green and yellow light alternately and you can reconnect it now.



• Share the camera to other people. •

Tap “members-Invite new member” .Press to send a link to your family member.

The shared member should open the link with browser and tap “Receive” . Open Wansview Cloud app and tap “Confirm” . The family member can use the camera now. (The shared member should download Wansview Cloud app and register an account if he/she is a new user)



LET US KNOW WHAT YOU THINK



Thank you so much for your order and trust to Wansview. Please feel free to contact us if you have any questions about the product application.

As a young and growing company, it would mean the world to us if you could leave an honest review about our product and services.

- US/CA: service2@wansview.com
UK: service3@wansview.com
- TEL: +13236863288
Available time: 6 pm - 3 am (PST Time) from Monday to Friday
- Online chat: Chat on Wansview Cloud app: Me-Contact Us-Online Customer Service
- Facebook: <https://www.facebook.com/WansviewOfficial>
- Youtube: <https://www.youtube.com/WansviewOfficial>

The instruction is for reference only. Slight differences may be found in the user interface.

All the designs and software here are subject to change without prior written notice. For latest instructions, please go to www.wansview.com to download.