



We keep improving the app, if the app interface is not accordance with the instructions, please go to wansview website: <http://www.wansview.com> for the latest instructions.  
EN Version Updated on 8th August 2018

[www.wansview.com](http://www.wansview.com)

Download the App (Android and iOS)

First, connect your mobile device to your WiFi and download the App "Wansview" on the App Store or Google Play store, or scan below QR Code to download it.



What's in the box?

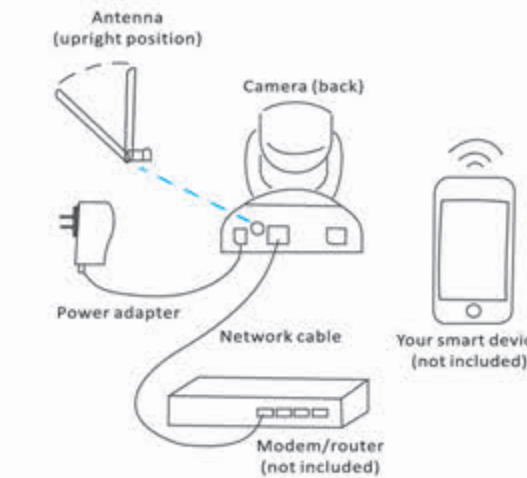
- 1 Installation Guide
- 1 Camera
- 1 Antenna
- 1 Power Adapter
- 1 Network Cable
- 1 CD (for PC)
- 1 Mounting Bracket
- Mounting Accessories



3

Connect to network

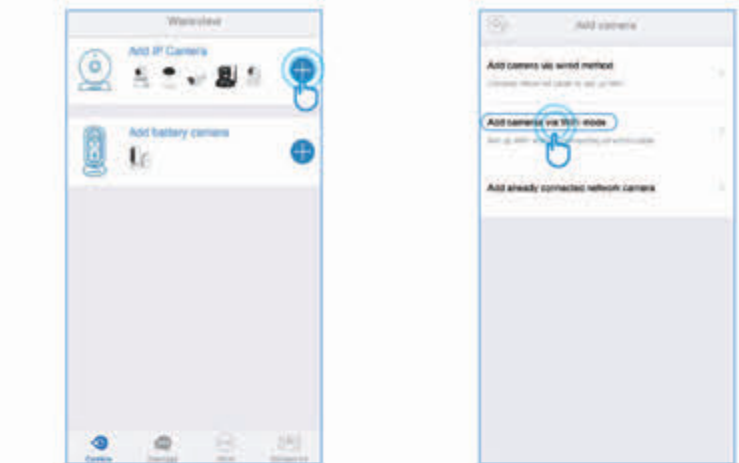
- Connect antenna to the back of the camera
- Connect the power adapter to the camera and plug into power outlet
- Connect the camera to your router with ethernet cable



4

Add camera Via Wired Method

- 1.Select[Add IP Camera] and tap + to add camera
- 2.Select[Add Cameras via wired method]



5

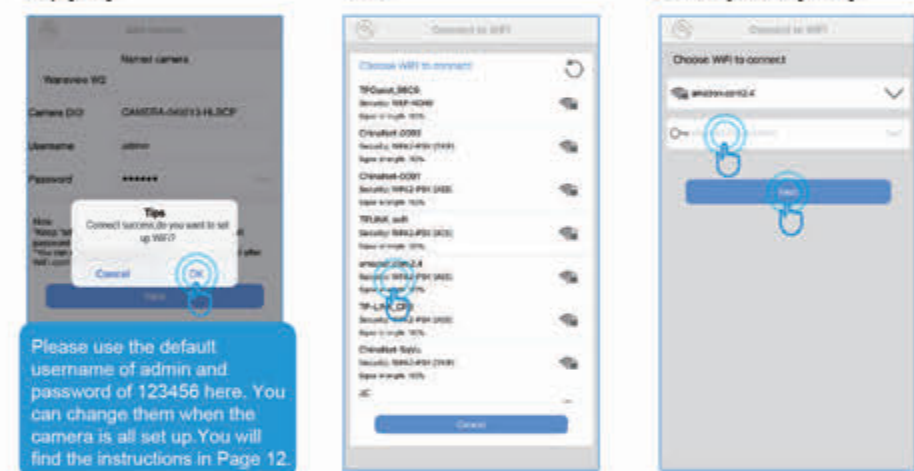
- 4.Scan the QR code on the bottom of the camera.
- 5.Name the camera, then [Next], Connect Success will appear, you could tap [Cancel] if for wired connection. For WiFi Setting, please refer to P7
- 6.You should see it says online. Congratulations! Your camera is all set up. Click on the image to enjoy viewing and controlling it now.



6

WiFi Setting

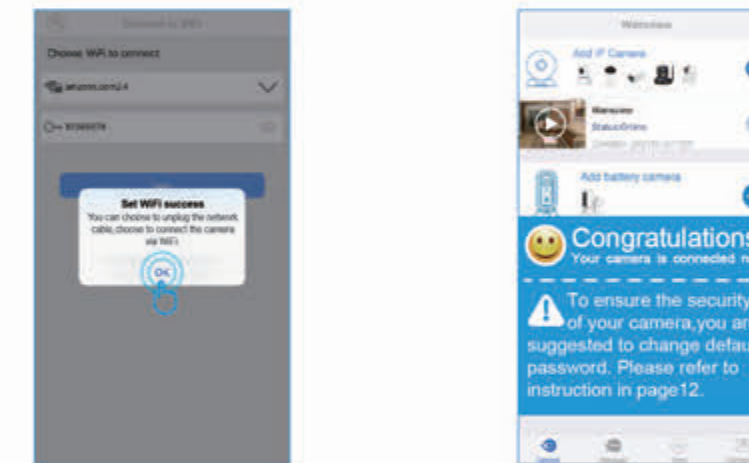
7. To Set up WiFi, Please Tap [OK].
8. Select your home 2.4G WiFi.
9. Input WiFi password correctly, then [Next].



Please use the default username of admin and password of 123456 here. You can change them when the camera is all set up. You will find the instructions in Page 12.

7

10. Set WiFi success appear, please tap [OK]. And you could unplug the network cable.
11. You should see it says online. Congratulations! Your camera is all set up. Click on the image to enjoy viewing and controlling it now.



8

Live Video Interface

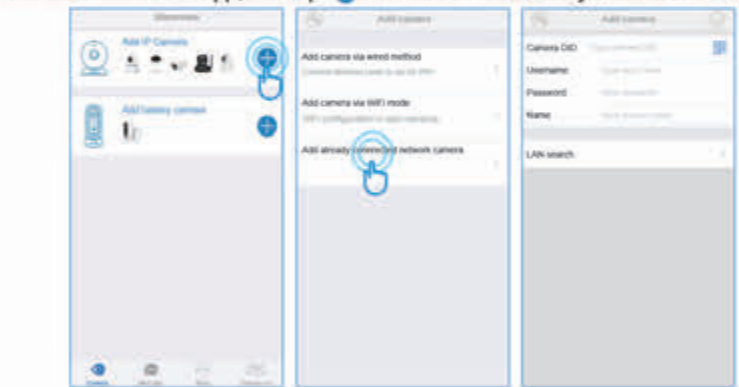


- Menu
- IR ON
- IR OFF
- Cruise Horizontally
- Cruise Vertically
- Mirror
- Flip
- Exit
- Snapshot to phone
- Record video to phone
- Unavailable
- Unavailable
- Contrast
- Brightness
- Restore to default
- 1080P(720P)/480P

9

How to connect the camera to the second Phone?

Wansview camera supports 4 devices to view the same camera at the same time. After you use one phone to get your camera connected to your WiFi and you can view the live video from your first phone. If you would like to add your camera to the second phone, please follow the below steps:  
1: Download the Wansview App to the second phone  
2: Launch the Wansview app, and tap "+" and select "Add already connected network camera".



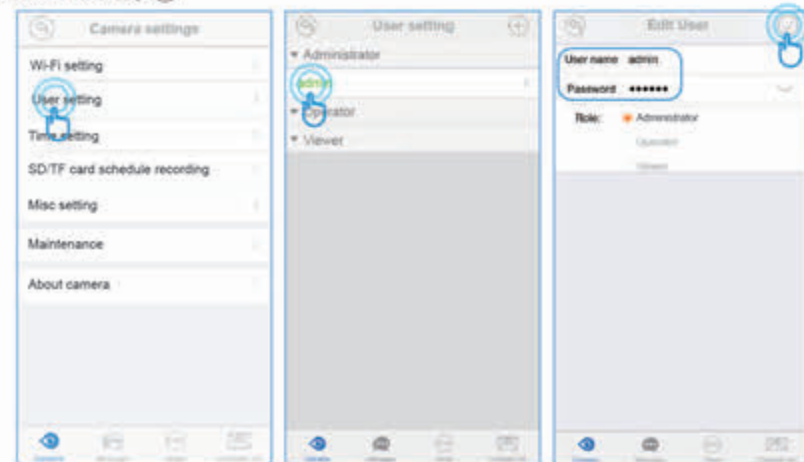
10

- User can use the below ways to add the camera:
- 1) Lan Search  
Tap User Setting, and choose Administrator>Admin, user can change the user name and password, then tap [OK].
  - 2) Scan QR code  
If camera is on your hand, you can tap [QR] to scan the Camera's QR code to get the camera information.
  - 3) Manually input camera information  
Camera's DID can be found from the camera's sticker or Wansview app. default Username/Password is admin/123456; Name can be any information. Attention: Please remember to give your camera a name, and input your Password. Click on [OK] go back to home to start to view & control.

**Change password and add another user**  
When the camera is "online", click on [Settings] to access "Advanced Setting", Under the User Setting/Management, user can change the default username(admin) and password (123456), or create another user account with certain access rights, such as an Operator or Viewer account for other person to view the camera.

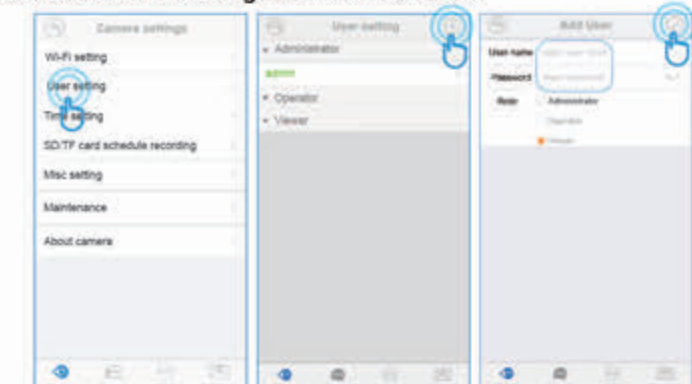
11

**Change Username and password**  
Tap User Setting, and choose Administrator>Admin, user can change the user name and password, then tap [OK].



12

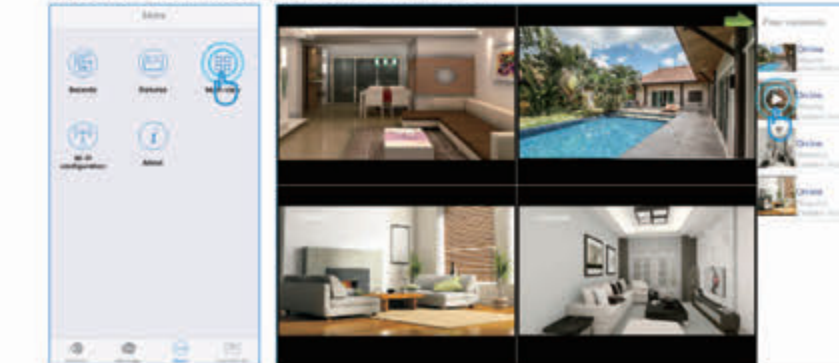
**Add another user account**  
On User Setting, tap [Add user] to add user, manually add the user name and password, then choose the Role(Operator or Viewer).  
Administrator: Full access rights  
Operator: Can operate on the camera live video screen, but not access to other settings like Alarm setting, Advanced Setting etc.  
Viewer: only can view camera, no more operations on the camera video screen.  
Note: Password shall be no longer than 20 characters.



13

Trouble Shooting Frequently Asked Questions

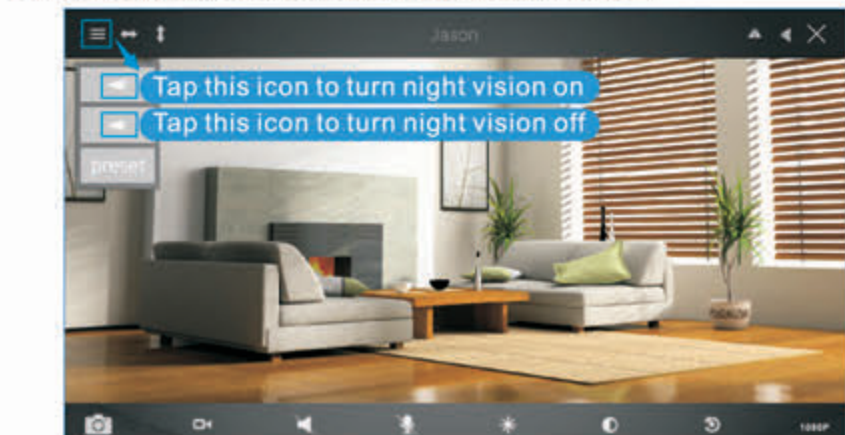
**1. If you have several cameras, please follow the below steps to use Multi-view function.**  
Tap More on the Menu, then choose Multi-View



14

**2. How do I change my video stream resolution?**  
Click on the icon 480P to change the resolution.

**3: Night vision doesn't work**  
If the night vision stops working, please turn on the IR light as below



15