



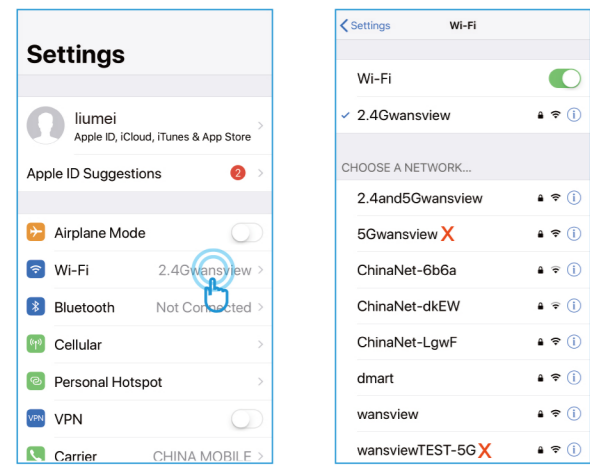
We keep improving the app, if the app interface is not accordance with the instructions, please go to wansview website: <http://www.wansview.com> for the latest instructions.

18th September 2018

www.wansview.com

Connect Phone with 2.4G WIFI

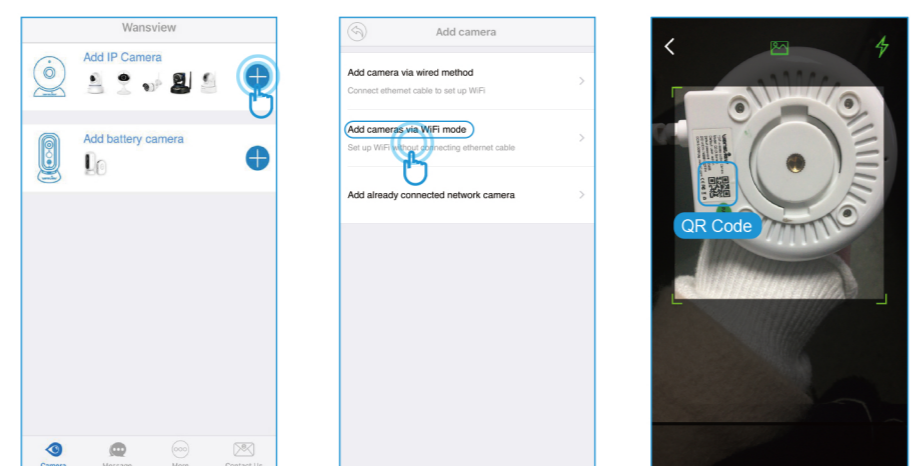
Connect your mobile phone with 2.4G WIFI. (5G is not supported for the camera) If you are using a dual band router, make sure your 2.4G WIFI name is different from your 5G one.



6

Method 1: Add camera via WIFI mode

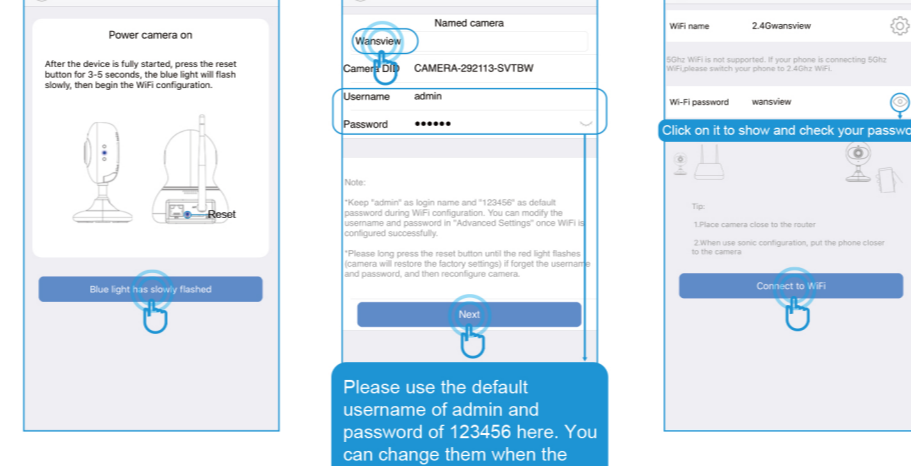
1. Select [Add IP Camera] and tap **+** to add camera
2. Select [Add cameras via WIFI mode]
3. Scan the QR code on the back of the camera



7

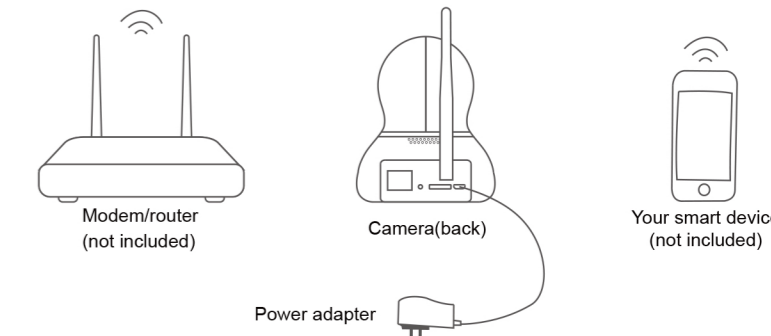
Method 2: Add camera Via Wired Method

1. Select [Add IP Camera] and tap **+** to add camera
2. Select [Add cameras via wired method]
3. Tap [Next] if the camera is connected with power supply and ethernet cable.



Power on Camera

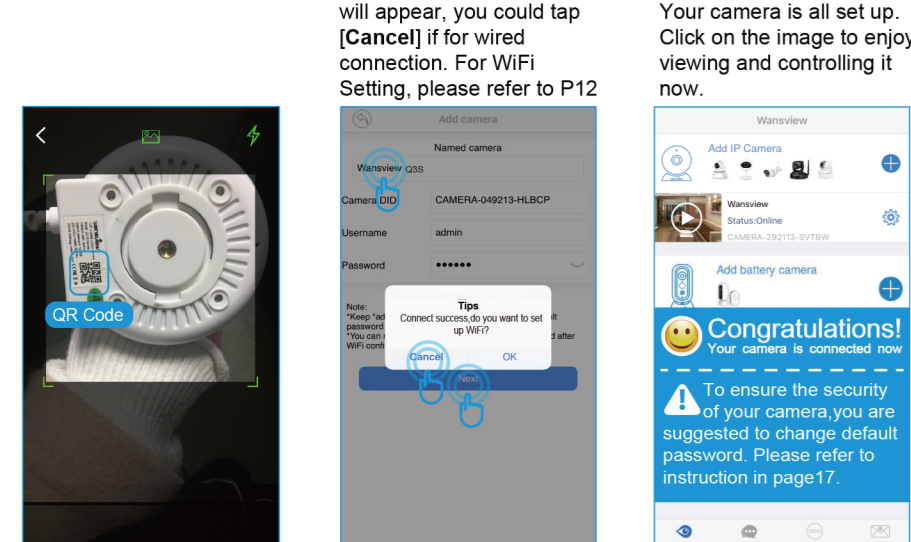
Please make sure the camera is in the same room, close to the router, before performing the setup. Then, using the included power supply, connect to Power.



Tips: You can relocate it to where you want after it is all set up. You just unplug it and move it to the new location and plug it in, the camera will connect to your WiFi automatically, no need to set it up again. But please make sure the new location will not be far from your router.

5

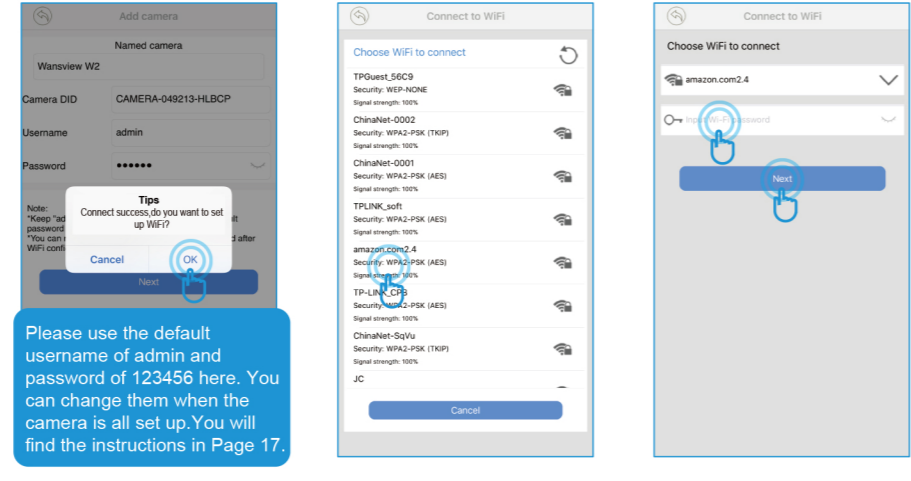
4. Scan the QR code on the bottom of the camera.
5. Name the camera, then [Next].
6. You should see it says online. Congratulations! Your camera is all set up. Click on the image to enjoy viewing and controlling it now.



11

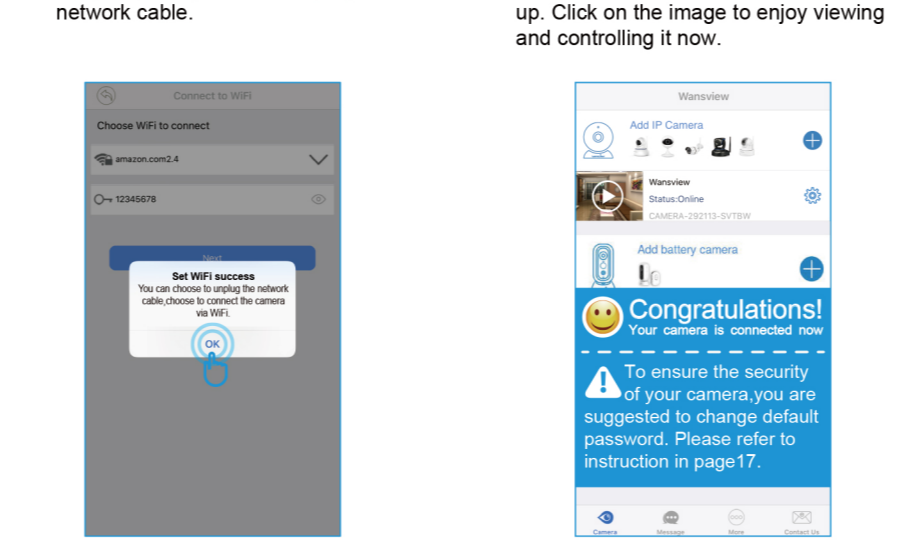
WiFi Setting

7. To Set up WIFI, Please Tap [OK].
8. Select your home 2.4G WIFI.
9. Input WIFI password correctly, then [Next].



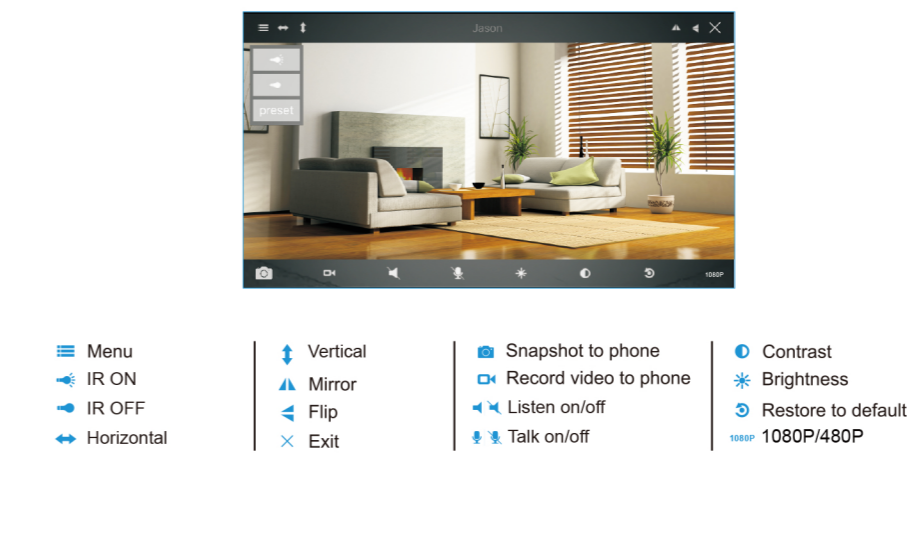
12

10. Set WIFI success appear, please tap [OK]. And you could unplug the network cable.
11. You should see it says online. Congratulations! Your camera is all set up. Click on the image to enjoy viewing and controlling it now.



13

Live Video Interface

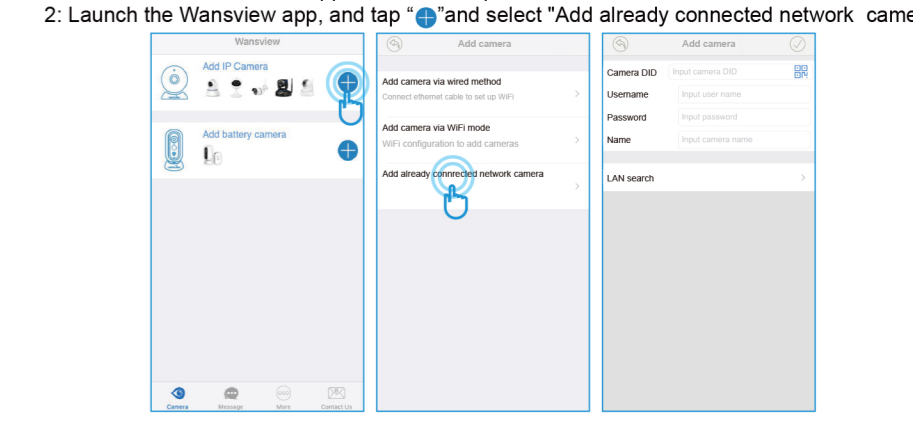


14

How to connect the camera to the second Phone?

Wansview camera supports 4 devices to view the same camera at the same time. After you use one phone to get your camera connected to your WiFi and you can view the live video from your first phone.

1. Download the Wansview App to the second phone
2. Launch the Wansview App, and tap **+** and select "Add already connected network camera".



15

User can use the below ways to add the camera:

- 1) Lan Search
- 2) Scan QR code
- 3) Manually input camera information

Attention: Please remember to give your camera a name, and input your Password. Click on **+** go back to home to start to view & control.

Change password and add another user

When the camera is "online", click on **+** to access "Advanced Setting". Under the User Setting/Management, user can change the default username(admin) and password (123456), or create another user account with certain access rights, such as an Operator or Viewer account for other person to view the camera.

Change password and add another user

When the camera is "online", click on **+** to access "Advanced Setting". Under the User Setting/Management, user can change the default username(admin) and password (123456), or create another user account with certain access rights, such as an Operator or Viewer account for other person to view the camera.

Change password and add another user

When the camera is "online", click on **+** to access "Advanced Setting". Under the User Setting/Management, user can change the default username(admin) and password (123456), or create another user account with certain access rights, such as an Operator or Viewer account for other person to view the camera.

Change password and add another user

When the camera is "online", click on **+** to access "Advanced Setting". Under the User Setting/Management, user can change the default username(admin) and password (123456), or create another user account with certain access rights, such as an Operator or Viewer account for other person to view the camera.

Change password and add another user

When the camera is "online", click on **+** to access "Advanced Setting". Under the User Setting/Management, user can change the default username(admin) and password (123456), or create another user account with certain access rights, such as an Operator or Viewer account for other person to view the camera.

Change password and add another user

When the camera is "online", click on **+** to access "Advanced Setting". Under the User Setting/Management, user can change the default username(admin) and password (123456), or create another user account with certain access rights, such as an Operator or Viewer account for other person to view the camera.

Change password and add another user

When the camera is "online", click on **+** to access "Advanced Setting". Under the User Setting/Management, user can change the default username(admin) and password (123456), or create another user account with certain access rights, such as an Operator or Viewer account for other person to view the camera.

Change password and add another user

When the camera is "online", click on **+** to access "Advanced Setting". Under the User Setting/Management, user can change the default username(admin) and password (123456), or create another user account with certain access rights, such as an Operator or Viewer account for other person to view the camera.

Change password and add another user

When the camera is "online", click on **+** to access "Advanced Setting". Under the User Setting/Management, user can change the default username(admin) and password (123456), or create another user account with certain access rights, such as an Operator or Viewer account for other person to view the camera.

Change password and add another user

When the camera is "online", click on **+** to access "Advanced Setting". Under the User Setting/Management, user can change the default username(admin) and password (123456), or create another user account with certain access rights, such as an Operator or Viewer account for other person to view the camera.

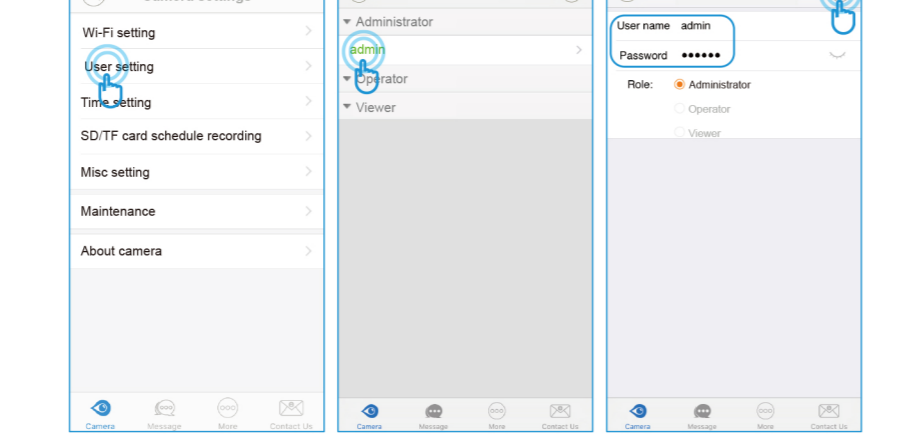
Change password and add another user

When the camera is "online", click on **+** to access "Advanced Setting". Under the User Setting/Management, user can change the default username(admin) and password (123456), or create another user account with certain access rights, such as an Operator or Viewer account for other person to view the camera.

Change password and add another user

Change Username and password

Tap User Setting, and choose Administrator-Admin, user can change the user name and password, then tap **+**



17

Add another user account

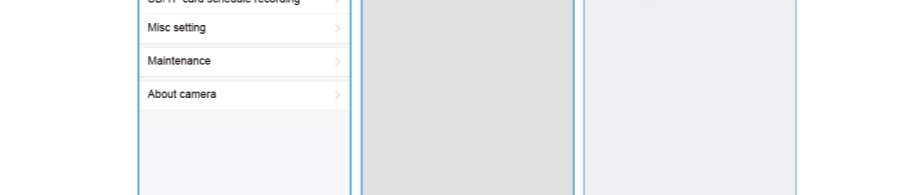
On User Setting, tap **+** to add user, manually add the user name and password, then choose the Role(Operator or Viewer).

Administrator: Full access rights

Operator: Can operate on the camera live video screen, but not access to other settings like Alarm setting, Advanced Setting etc.

Viewer: only can view camera, no more operations on the camera video screen.

Note: Password shall be no longer than 20 characters.

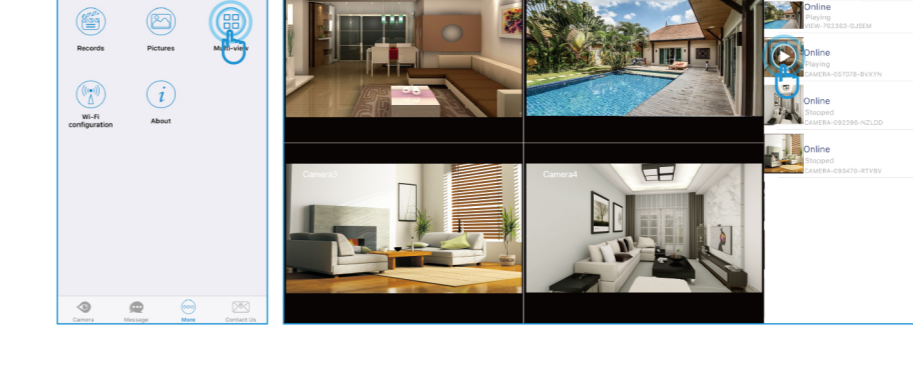


18

Trouble Shooting Frequently Asked Questions

1. If you have several cameras, please follow the below steps to use Multi-view function.
2. How do I change my video stream resolution?
3. Night vision doesn't work

Tap More on the Menu, then choose Multi-View



19

4. How to restore to factory default

Push down the "Reset" button around 15-20 seconds until the red light flashes quickly and you will hear a beep, then the camera will be back to factory default. After restore, please set up the camera using the default user name (admin) and password(123456).



5. I want to add the camera to other software/app, which URL should I use?

RTSP Stream: [rtsp://ip:rtsp port /live/ch0](http://ip:rtsp port /live/ch0) (default RTSP port: 554)

MJPEG Stream: <http://ip:port/mjpeg/stream.cgi?chn=0>

Snapshot: ip:port/mjpeg/snap.cgi?chn=0

6. Why can't I access the camera remotely with Wansview App when I am outside?

If your phone is using cellular data, please check if Wansview App has the permission of cellular data usage on your phone or not.

If your phone is on other available WiFi network, you still can't access the camera remotely, the problem might be the firewall of your home router which blocks outside network to access the camera. Please follow below instruction to turn router's firewall off to allow outside network to access the camera.

Connect your phone to home WiFi—go to Wireless setting of your phone, you can know router's IP address—input the IP address to browser on your phone—input router's username and password then you can log in your router—find option "Firewall"—you can turn it off.

Or you can access your home router on your computer, the link for your reference :

<https://www.wikihow.com/Access-a-Router>

Connect your phone to home WiFi—go to Wireless setting of your phone, you can know router's IP address—input the IP address to browser on your phone—input router's username and password then you can log in your router—find option "Firewall"—you can turn it off.

Or you can access your home router on your computer, the link for your reference :

<https://www.wikihow.com/Access-a-Router>

Connect your phone to home WiFi—go to Wireless setting of your phone, you can know router's IP address—input the IP address to browser on your phone—input router's username and password then you can log in your router—find option "Firewall"—you can turn it off.

Or you can access your home router on your computer, the link for your reference :

<https://www.wikihow.com/Access-a-Router>

21

22