

Wansview HD Wireless IP Camera K3(1080P)/K2(720P) User Manual



We keep improving the app, if the app interface is not accordance with the instructions, please go to wansview website: <http://www.wansview.com> for the latest instructions.
EN Version Updated on 10th August 2018

www.wansview.com

HD Wireless IP Camera K3(1080P)/K2(720P) Wansview

Download the App (Android and iOS)

Go to the App Store or Google Play to search and download "Wansview" APP to your supported device .Or scan the QR code below to get the app.



What's in the box?

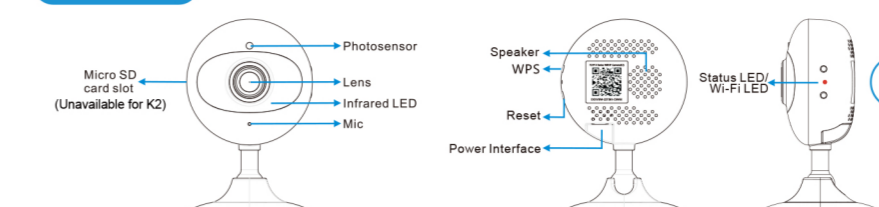
- 1 Installation guide
- 1 Camera
- 1 Power adapter
- Mounting accessories



3

HD Wireless IP Camera K3(1080P)/K2(720P) Wansview

connections



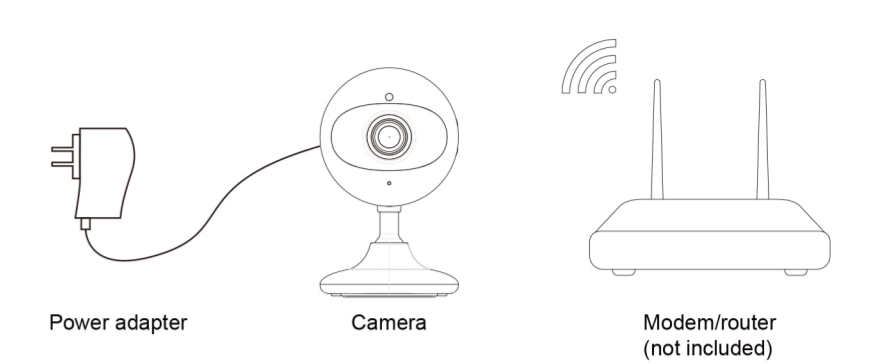
Indicator Light Status	Device Status
Red light is blinking slowly	Power up and activating
Red and blue lights are blinking slowly	The device is ready to connect
Blue light is blinking quickly	The device is receiving the wifi signal or connecting to the wifi
Blue and red lights are solid and steady	The device is connected to the network
Red light is blinking quickly	The device is restore to factory default
Blue light goes off	The device failed to connect to the network

4

HD Wireless IP Camera K3(1080P)/K2(720P) Wansview

Power on Camera

Please make sure the camera is in the same room, close to the router, before performing the setup. Then, using the included power supply, connect to Power.



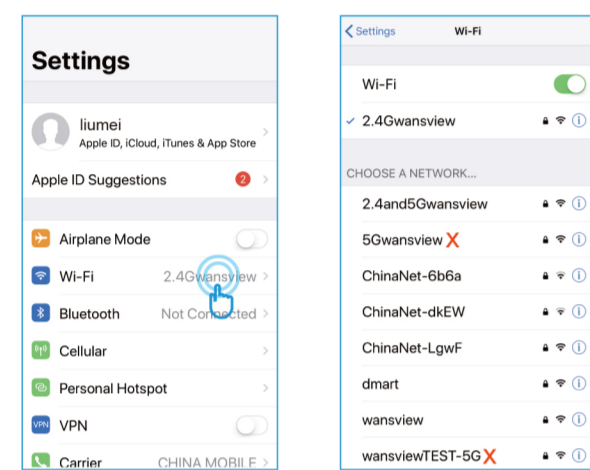
Tips: You can relocate it to where you want after it is all set up. You just unplug it and move it to the new location and plug it in, the camera will connect to your WiFi automatically, no need to set it up again. But please make sure the new location will not be far from your router.

5

HD Wireless IP Camera K3(1080P)/K2(720P) Wansview

Connect Phone with 2.4G WiFi

Connect your mobile phone with 2.4G WiFi. (5G is not supported for the camera) If you are using a dual band router, make sure your 2.4G WiFi name is different from your 5G one.

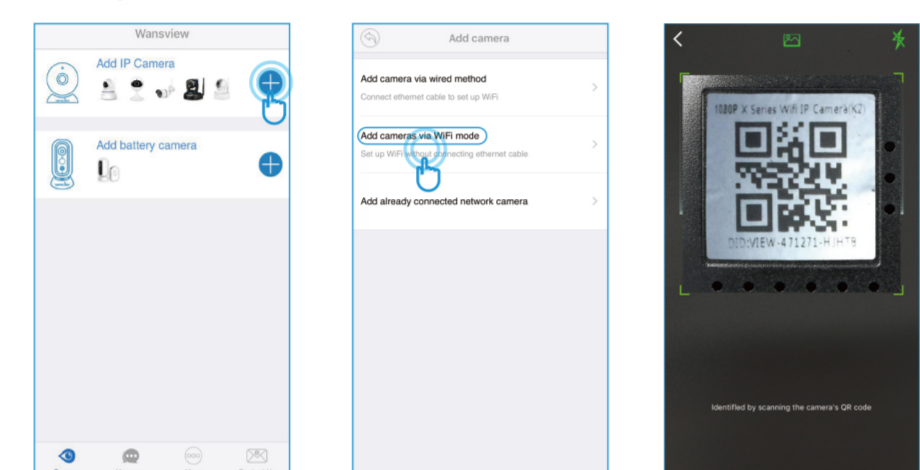


6

HD Wireless IP Camera K3(1080P)/K2(720P) Wansview

Add Camera and Connect WiFi

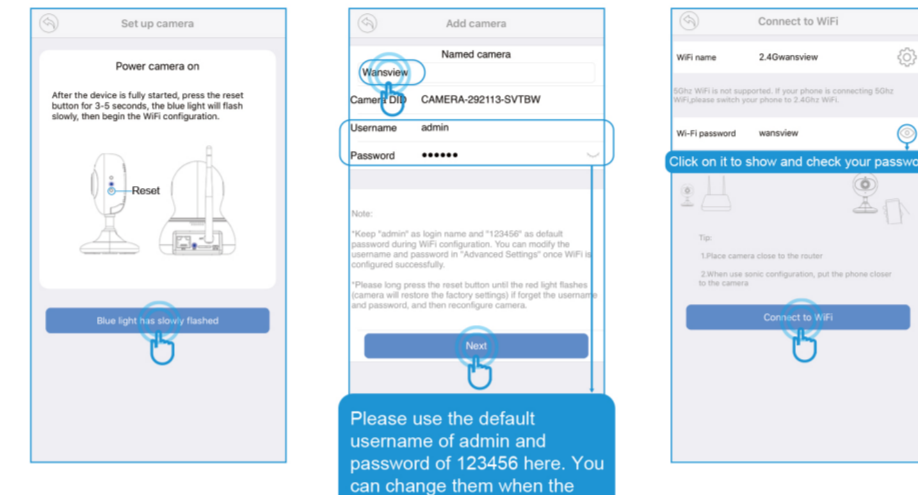
1. Select [Add IP Camera], and tap + to add camera
2. Select [Add cameras via WiFi mode]
3. Scan the QR code on the back of the camera



7

HD Wireless IP Camera K3(1080P)/K2(720P) Wansview

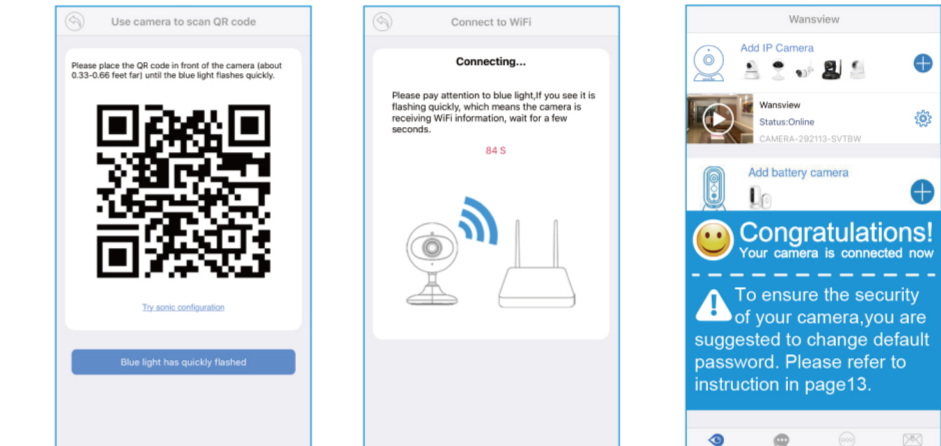
4. Hold "Reset" button about 3-5 seconds until you see the blue light is on
5. Name the camera, then [Next]
6. Input your WiFi password and click on [Connect to WiFi]



8

HD Wireless IP Camera K3(1080P)/K2(720P) Wansview

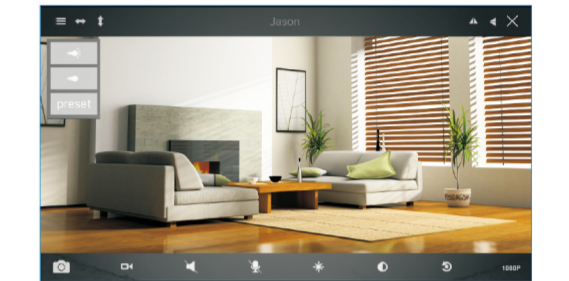
7. Use the camera to Scan the QR Code, Click on [Blue light has quickly flashed] when the blue light flashes quickly
8. When the camera receives WiFi signal, it will sound 2 beeps
9. You should see it says online. Congratulations! Your camera is all set up. Click on the image to enjoy viewing and controlling it now



9

HD Wireless IP Camera K3(1080P)/K2(720P) Wansview

Live Video Interface



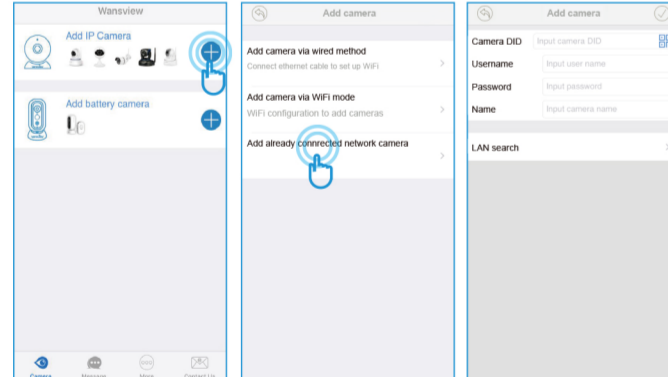
- Menu
- IR ON
- IR OFF
- Unavailable
- Snapshot to phone
- Record video to phone
- Flip
- Listen on/off
- Talk on/off
- Contrast
- Brightness
- Restore to default
- 1080P/480P

10

HD Wireless IP Camera K3(1080P)/K2(720P) Wansview

How to connect the camera to the second Phone?

Wansview camera supports 4 devices to view the same camera at the same time. After you use one phone to get your camera connected to your WiFi and you can view the live video from your first phone. If you would like to add your camera to the second phone, please follow the below steps:
1: Download the Wansview App, and tap + and select "Add already connected network camera".



11

HD Wireless IP Camera K3(1080P)/K2(720P) Wansview

User can use the below ways to add the camera:

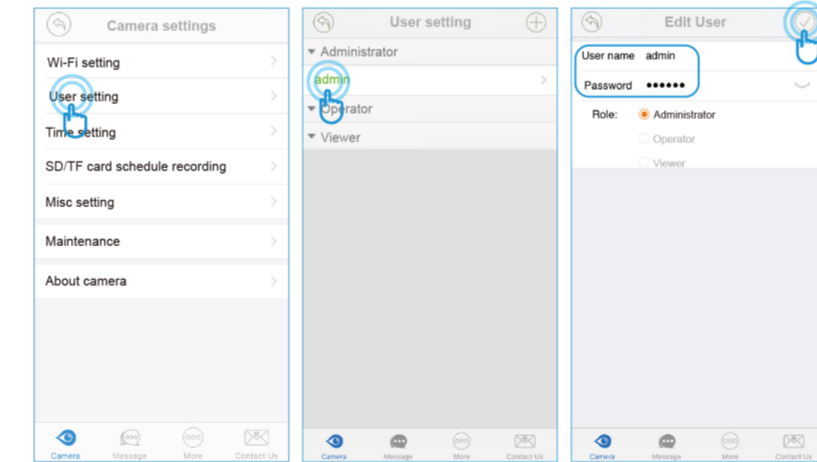
- 1) Lan Search
If the mobile device and the camera are in the same WiFi network, user can use "Lan Search" to search the connected camera.
- 2) Scan QR code
If camera is on your hand, you can tap to scan the Camera's QR code to get the camera information.
- 3) Manually input camera information
Camera's DID can be found from the camera's sticker or Wansview app.

default Username/Password is admin/123456; Name can be any information.
Attention: Please remember to give your camera a name, and input your Password. Click on go back to home to start to view & control.

12

HD Wireless IP Camera K3(1080P)/K2(720P) Wansview

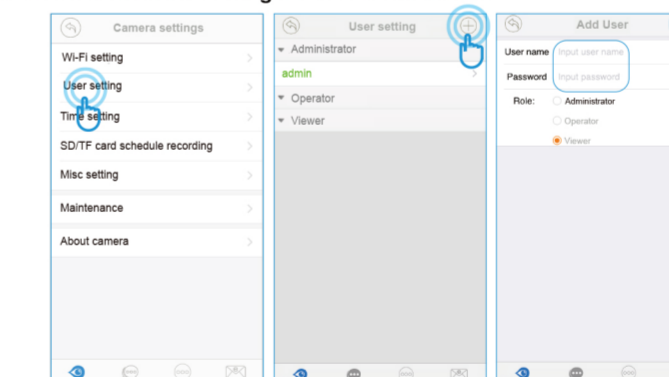
Change Username and password
Tap User Setting, and choose Administrator-Admin, user can change the user name and password, then tap



13

HD Wireless IP Camera K3(1080P)/K2(720P) Wansview

Add another user account
On User Setting, tap + to add user, manually add the user name and password, then choose the Role (Operator or Viewer).
Administrator: Full access rights
Operator: Can operate on the camera live video screen, but not access to other settings like Alarm setting, Advanced Setting etc.
Viewer: only can view camera, no more operations on the camera video screen.
Note: Password shall be no longer than 20 characters.

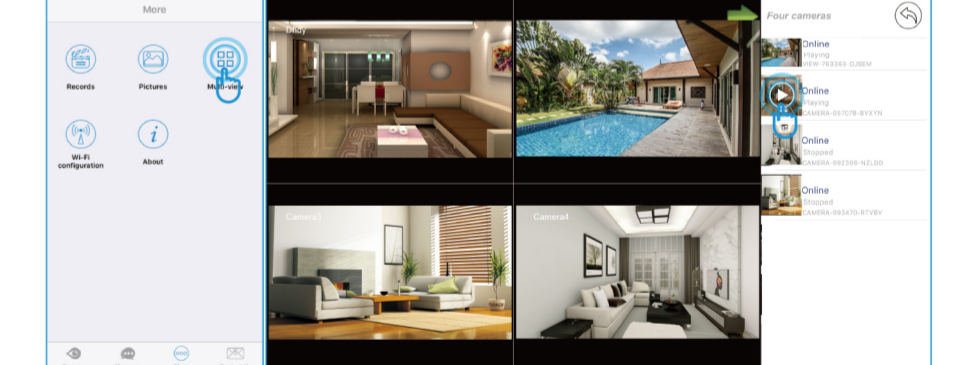


14

HD Wireless IP Camera K3(1080P)/K2(720P) Wansview

Trouble Shooting Frequently Asked Questions

1. If you have several cameras, please follow the below steps to use Multi-view function. Tap More on the Menu, then choose Multi-View

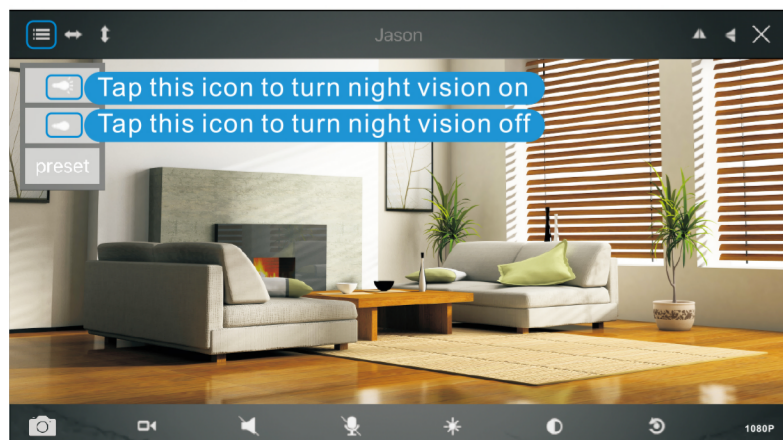


15

HD Wireless IP Camera K3(1080P)/K2(720P) Wansview

2. How do I change my video stream resolution?
Click on the icon 480P to change the resolution.

3. Night vision doesn't work
If the night vision stops working, please turn on the IR light as below



16

HD Wireless IP Camera K3(1080P)/K2(720P) Wansview

4. How to restore to factory default
Push down the "Reset" button around 15-20 seconds until the red light flashes quickly and you will hear a beep, then the camera will be back to factory default. After restore, please set up the camera using the default user name (admin) and password(123456).



5. I want to add the camera to other software/app, which URL should I use?
RTSP Stream: [rtsp://ip:port/rtsp port/live/ch0](http://ip:port/rtsp port/live/ch0) (default RTSP port: 554)
MJPEG Stream: <http://ip:port/mjpeg/stream.cgi?chn=0>
Snapshot: ip:port/mjpeg/snap.cgi?chn=0

17

HD Wireless IP Camera K3(1080P)/K2(720P) Wansview

6. Why can't I access the camera remotely with Wansview App when I am outside?

If your phone is using cellular data, please check if Wansview App has the permission of cellular data usage on your phone or not.

If your phone is on other available WiFi network, you still can't access the camera remotely, the problem might be the firewall of your home router which blocks outside network to access the camera. Please follow below instruction to turn router's firewall off to allow outside network to access the camera:

Connect your phone to home WiFi--go to Wireless setting of your phone, you can know router's IP address--input the IP address to browser on your phone--input router's username and password then you can log in your router--find option "Firewall"--you can turn it off. Or you can access your home router on your computer, the link for your reference:
<https://www.wikihow.com/Access-a-Router>

18